

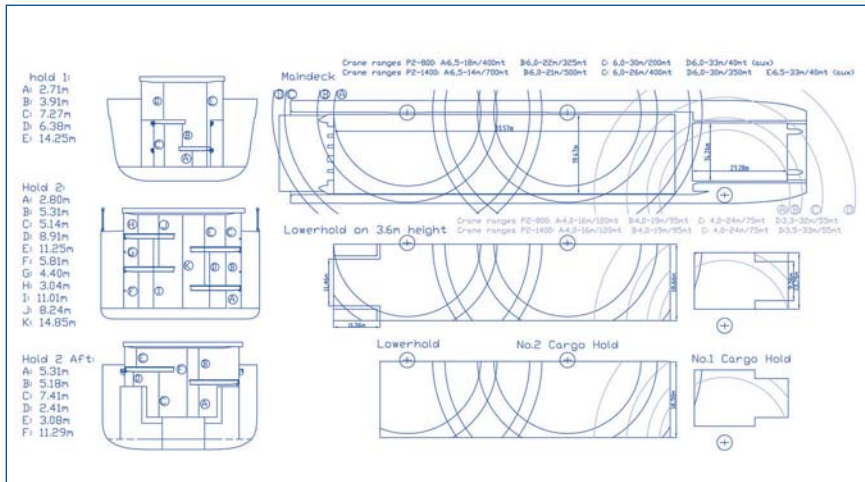


Your experts for heavy lift
and project cargo.

Beluga P2-Series

P2-800: MV »Beluga Presentation« · MV »Beluga Protection« · MV »Beluga Publication« · MV »Beluga Perception«
 P2-1400: MV »Beluga Bremen« · MV »Beluga Preparation« · MV »Beluga Provocation« · MV »Beluga Passion«
 MV »Beluga Procession« · MV »Beluga Progression« · MV »Beluga Perfection« · MV »Beluga Pioneer«
 MV »Beluga Passenger« · MV »Beluga Panoramax«

Flag	Antigua & Barbuda/ German	Capacity	Hold no. 1 cbm: abt. 4.214 cbm (excl. twd) or abt. 148.838 cbft Hold no. 2 cbm: abt. 21.745 cbm (excl. twd) or abt. 768.033 cbft Total cbm abt. 25.959 cbm (excl. twd) or abt. 916.871 cbft Hatchcover sqm: abt. 1.986 sqm Tweendeck sqm: abt. 1.894 sqm + 6 extra panels, Lower Hold sqm: abt. 1.725 sqm, Total sqm: abt. 5.881 sqm + 6 extra panels
Builders/ Place/Date	Volharding Shipyards, The Netherlands in cooperation with Hudong Shipyard, China, Shanghai, China, 2009–2012	Container capacity	Total container intake: 958 TEU or 428 FEU + 102 TEU On deck: 488 TEU or 228 FEU + 32 TEU Under deck: 470 TEU or 200 FEU + 70 TEU Basis 14mt: 738 TEU No. of reefer plugs: 100 FEU Hold 1 container intake: 65 TEU Hold 2 container intake: 405 TEU Hatch 1 container: 60 TEU Hatch 2 container: 428 TEU
Type	Heavy Lift Multipurpose Dry Cargo Vessel strengthened for heavy cargoes, equipped for the carriage of containers	Holds/ Hatches	Number of Holds: 2 Hold form: double skinned, boxshaped/narrow stepwise in container dimensions Hatchcover: Hatch 1: abt. 23,28 m (22,94 m opening) x abt. 14,26 m (13,76 m opening), Hatch 2: abt. 85,00 m (82,40 m opening) x abt. 19,46 m (18,66 m opening) Tweendeck: Hold 1: 22,94 m x 13,76 m, Hold 2: 82,40 m x 18,66 m
Main data	Call Sign: miscellaneous Port of Registry: St. John's/Elsfleth Class: GL 100 A5, Multipurpose Dry Cargo Ship, Iceclass E3, G (Strengthened for Heavy Cargoes), IWS (In-Water- Survey), EP (Environmental Passport), Equipped for the carriage of dangerous goods, SOLAS II-2, Reg. 19 + MC E3 AUT		
Dimensions	LOA: abt. 168,68 m LBP: 155,79 m Breadth mld.: 25,20 m Draft: 9,50 m ssw Depth mld.: 13,85 m Air draft: abt. 45,15 m (35,65 m + 9,50 m draft)		
Tonnage	Deadweight excl. twd: abt. 20.000 tdw (P2-800) abt. 19.700 tdw (P2-1400) Weight of tweendecks: n.a. GT: n.a. NT: n.a. Panama NT: n.a. Suez GRT: n.a.		



Your experts for heavy lift and project cargo.

Beluga P2-Series

- P2-800: MV »Beluga Presentation« · MV »Beluga Protection« · MV »Beluga Publication« · MV »Beluga Perception«
 P2-1400: MV »Beluga Bremen« · MV »Beluga Preparation« · MV »Beluga Provocation« · MV »Beluga Passion«
 MV »Beluga Procession« · MV »Beluga Progression« · MV »Beluga Perfection« · MV »Beluga Pioneer«
 MV »Beluga Passenger« · MV »Beluga Panoramax«

	<p>Lower hold: Hold 1: 22,94 m x 13,76 m / 8,14 m, Hold 2: 82,40 m x 18,66 m Hold sizes with vertical bulkheads: n.a. Heights: Tanktop - Hatchcover: abt. 14,85 m Tweendeck heights adjustable; Hold 1: 2 different heights of tweendeck, Hold 2: 4 different heights of tweendeck Type of hatch covers: Hydr. folding type, combinable w/pontoons Holds equipment: Both holds CO₂ fitted Ventilation: 6 fold air change per hour</p>	<p>Cranes 2&3: 14 m/700 mt, 21 m/500 mt, 26 m/400 mt, 30 m/350 mt, 33 m/40 mt (aux. hoist); Crane 1: 16 m/120 mt, 19 m/95 mt, 24 m/75 mt, 32 m/55 mt</p>
	<p>Load distribution</p>	<p>Tank top: 18,0 mt/sqm; Stack Load: 20': 90 mt, 40': 105 mt Hatch cover payload: 8,0 mt/sqm (for pontoon covers forward of hatch 2), 4,0 mt/sqm (for hydr.-folding cover) Tween deck: 3,5 mt/sqm</p>
IMO classes	<p>In hold: Hold 1: All Classes except 5.2 (Class 1 under water spray system); Hold 2: All Classes except 1.1 - 1.6 and 5.2, incl. 1.4S On deck: Hold 1: All Classes except Class 1 in first and second tier on maindeck, Class 7 generally prohibited without prior specific exception</p>	<p>Main engine data</p> <p>Maker and type: MAN 7L 58/64 9.800 kW Speed & consumption HFO: abt. 17,5 kn on abt. 34 mt IFO 380 cst/day at 90 % MCR Consumption MGO: At Sea: 0 mt/Idle: abt. 1,7 mt/Working: abt. 3,8 mt</p>
Cargo handling gear	<p>P2-800: Cranes 2&3: 2 x 400 mt SWL El.-Hydr: Cranes NMF, combinable up to 800 mt SWL; Crane 1: 1 x 120 mt SWL El.-Hydr: Cranes NMF; Outreach: Cranes 2&3: 18 m/400 mt, 22 m/325 mt, 30 m/200 mt, 33 m/40 mt (aux. hoist); Crane 1: 16 m/120 mt, 19 m/95 mt, 24 m/75 mt, 32 m/55 mt P2-1400: Cranes 2&3: 2 x 700 mt SWL El.-Hydr: Cranes NMF, combinable up to 1400 mt SWL; Crane 1: 1 x 120 mt SWL El.-Hydr: Cranes NMF; Outreach:</p>	<p>Manoeuvring data</p> <p>Bowthruster: 1 x 800 kW Rudder: Freehanging flap type</p>
		<p>Aux. Engine/Generator</p> <p>Aux. Engine/Generator: 3 x 850 kW Emergency Diesel: 1 x abt. 150 kW Shaft generator: 1 x 1550 kW</p>
		<p>Tank capacity</p> <p>Ballast water: abt. 12.000 cbm Fresh water: abt. 200 cbm HFO: abt. 1.500 cbm MGO: abt. 200 cbm</p>
		<p>Nautical equipment</p> <p>fitted for GMDSS A3, Iridium, Fleet 77, dual ecdis</p>